

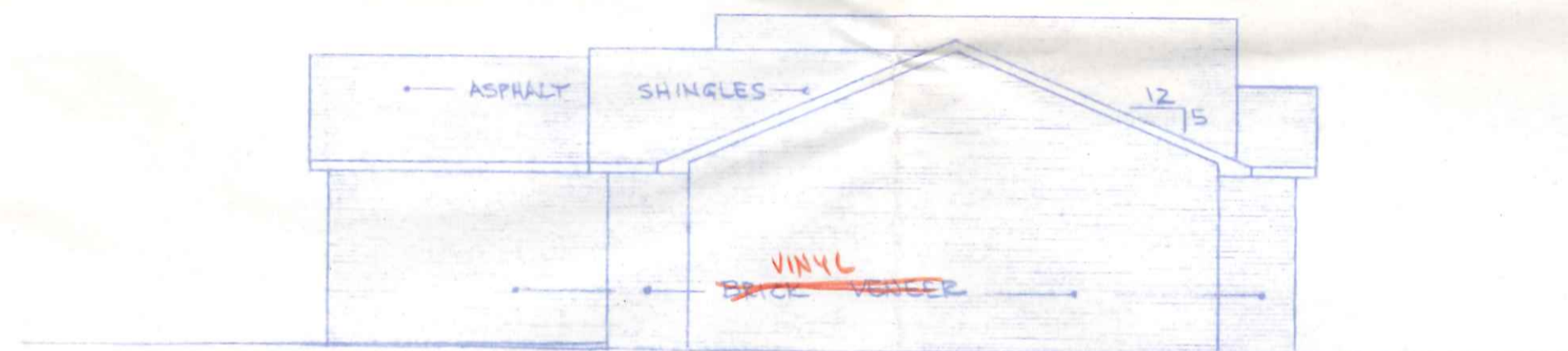


SIDE LOAD GARAGE
2-2'x4' WINDOWS IN FRONT

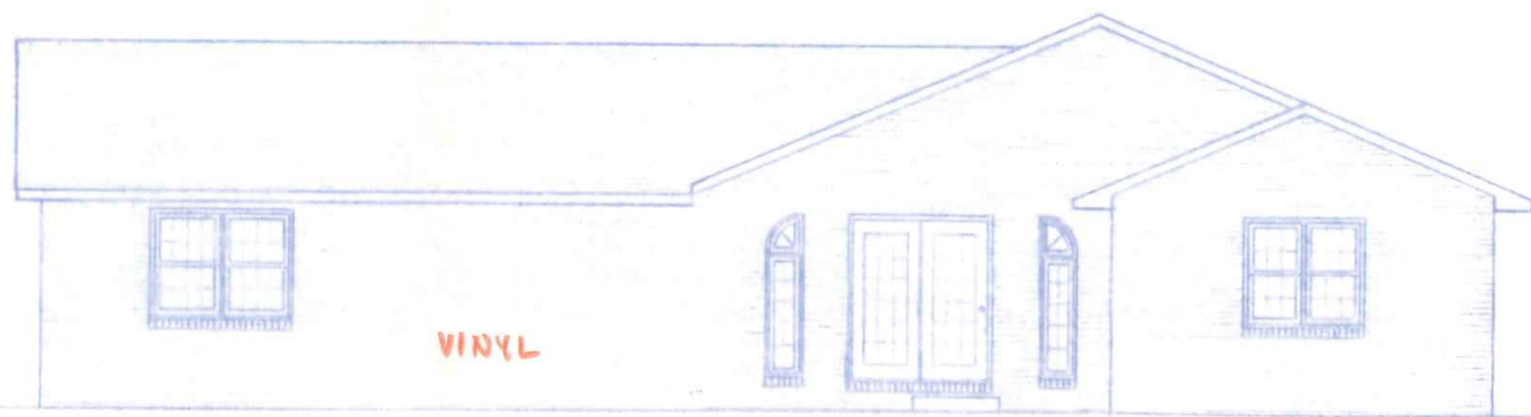
FRONT ELEVATION
1/4" = 1'-0"



LEFT SIDE ELEVATION
1/8" = 1'-0"

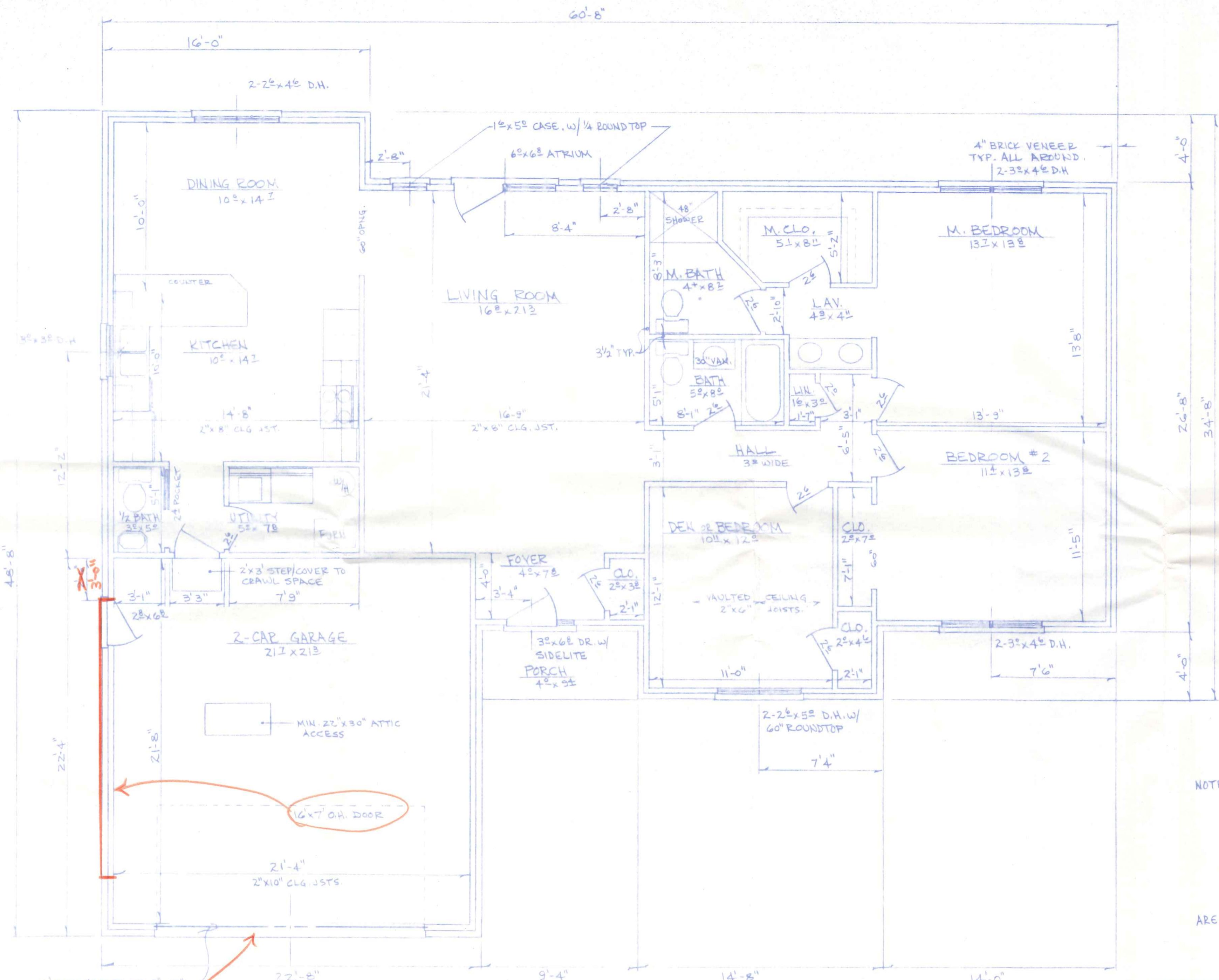


RIGHT SIDE ELEVATION
1/8" = 1'-0"



REAR ELEVATION
1/8" = 1'-0"

BECK CONSTRUCTION CO.	
CO. RD. M.	NAPOLCON, OHIO
SCALE NOTED	DWN. BY. RDS.
AUG. 1988	
ELEVATIONS	
PLAN NO. 233	1 OF 5

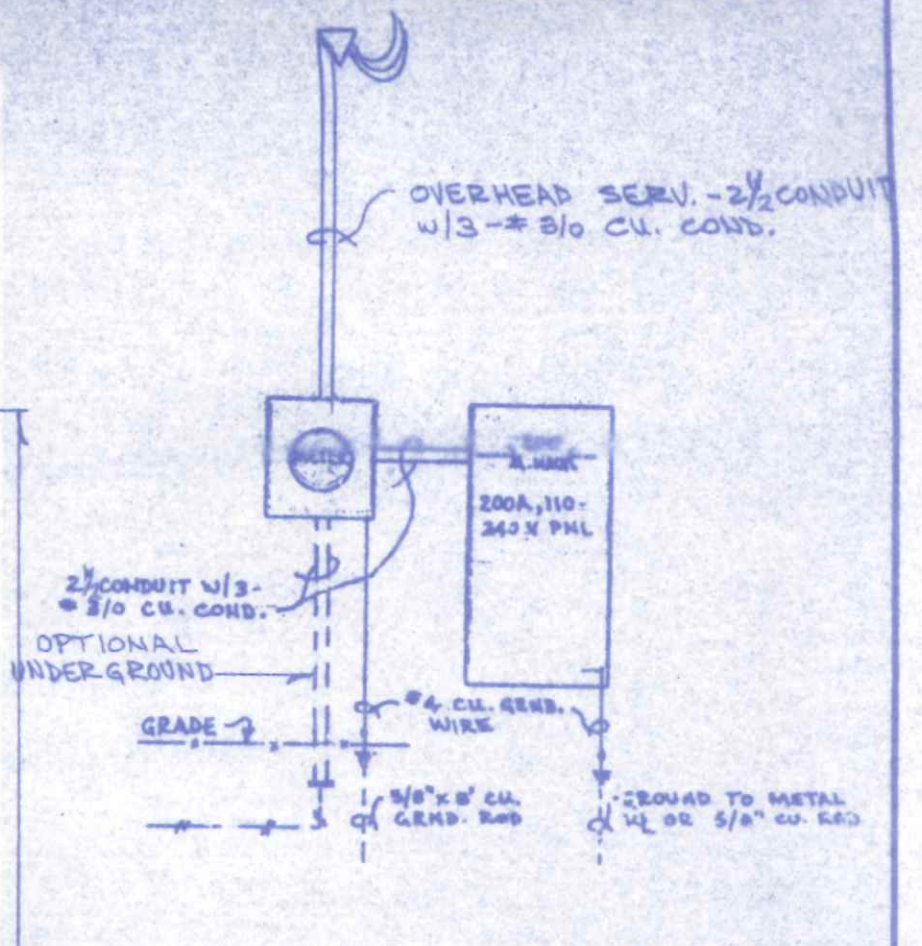
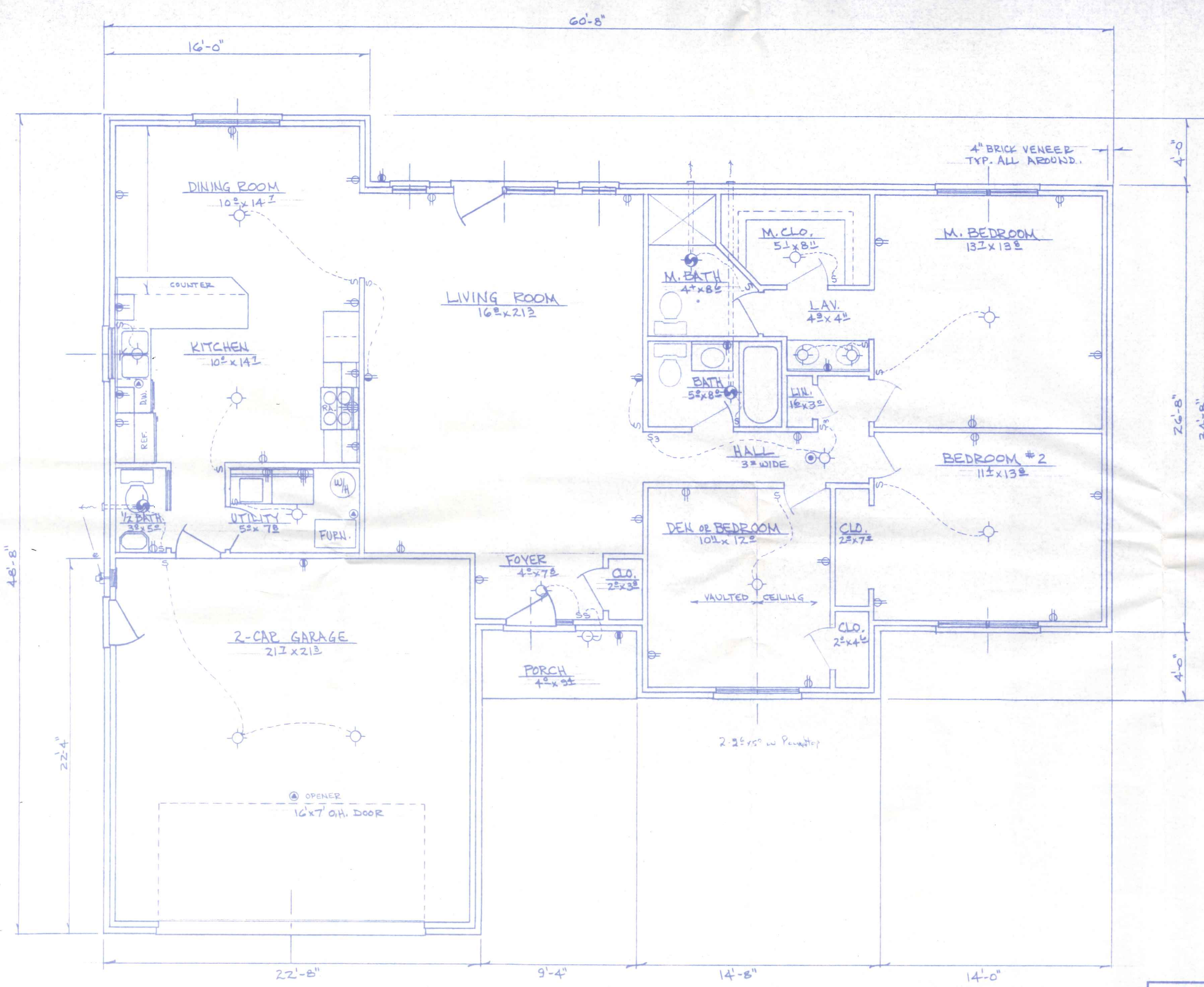


NOTES: 1. INTERIOR DIMENSIONS ARE TAKEN TO STUD LINE, EXTERIOR TO 1/2 FOUNDATION OR FACE/SHEATHING
 2. MIN. HEADERS AS FOLLOWS: (#2 SPF)
 INTERIOR - 2-2"x4", 0' to 4' SPAN
 2-2"x6" 4' to 6' "
 EXTERIOR - 2-2"x6", 0' to 4' "
 2-2"x8", 4' to 7' "
 OVER 7' AS NOTED.

AREA: 1643 SQ. FT. LIVING AREA GROSS
 505 " " GARAGE " " NET
 37 " " PORCH " "

16'0" DOOR HEADER - 2-2"x12" w/1/2" PLYWOOD BTWN. GLUED & NAILED
 2-2'0"x4'0" WINDOWS IN FRONT

BECK CONSTRUCTION CO.		NAPOLEON, OHIO	
CO. RD. 14	SCALE: 1/4" = 1'-0"	APPROVED BY:	DRAWN BY: EDS
DATE: AUG. 1988			REVISED:
FLOOR PLAN			
PLAN NO. 233		DRAWING NUMBER 2 OF 5	

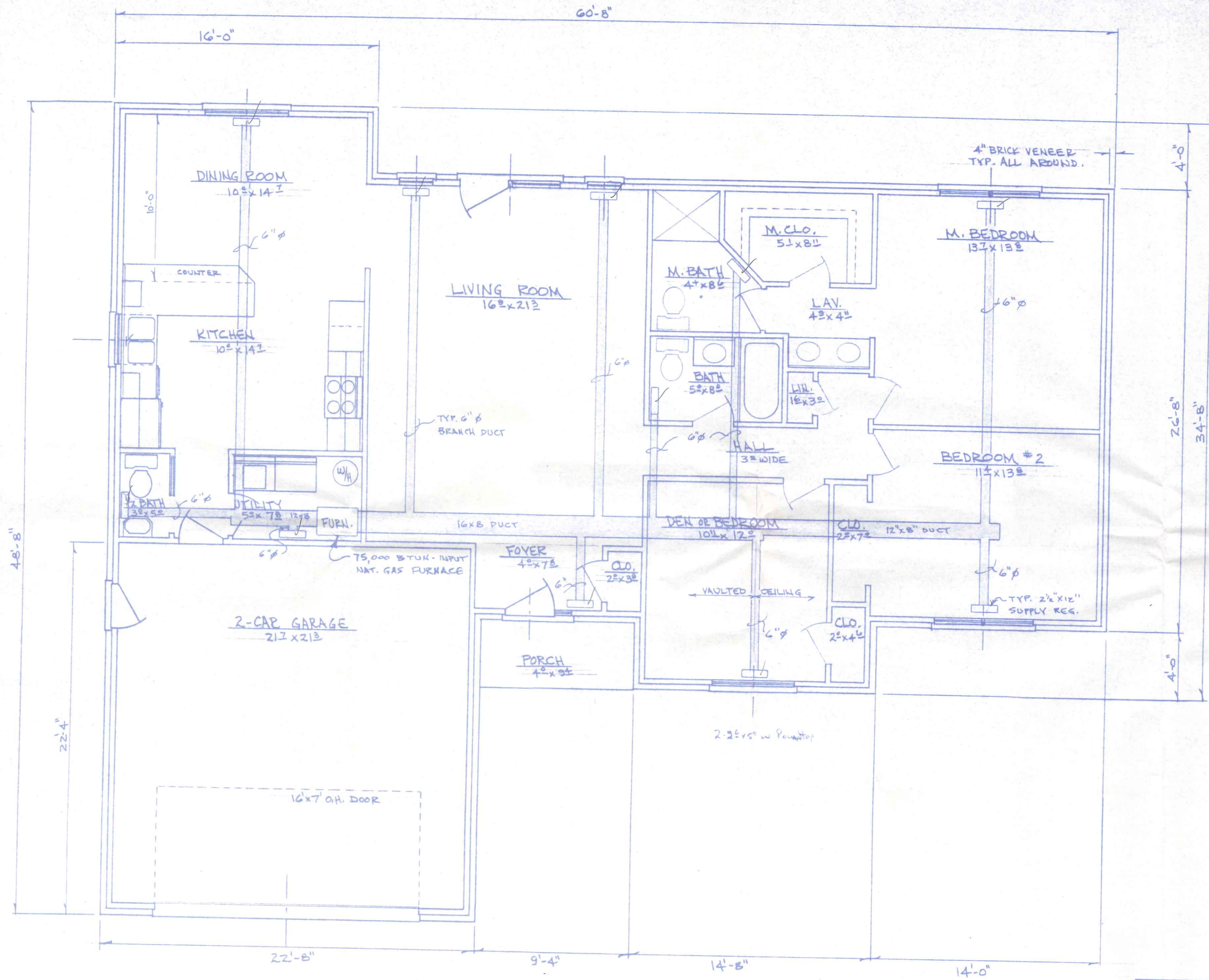


ELECTRICAL RISER DIAGRAM
NO. SCALE

- LEGEND**
- CEILING LIGHT
 - WALL LIGHT
 - CEILING CIRCULATING FAN
 - CEILING LIGHT WITH CIRCULATING FAN
 - CEILING LIGHT WITH EXHAUST FAN
 - EXTERIOR FLOOD LIGHT
 - PRIMARY POWERED SMOKE DETECTOR (WITH BATTERY BACKUP OPTIONAL)
 - SPECIAL OUTLET AS NOTED
 - 120V - 20A DUPLEX RECEPTACLE
 - 120V - 20A DUPLEX RECEPTACLE 2) SWITCHED
 - 120V - 20A SWIVEL RECEPTACLE WITH G.F.C.I. PROTECTION
 - 240V APPLIANCE OUTLET
 - S 120V - 20A LIGHT SWITCH
 - S 120V - 20A FAN SWITCH
 - S 120V - 20A 3 WAY LIGHT SWITCH

- NOTES**
- 1) See Foundation Plan for Basement Electrical
 - 2) Min. 20A. CIR., #12 WIRE
 - 3) All Work and Material shall be as per National Electric Code

BECK CONSTRUCTION CO.	
CO. RD. M.	NAPOLEON, OHIO
SCALE: 1/4" = 1'-0"	APPROVED BY:
DATE: AUG. 1988	DRAWN BY: EDS
FLOOR PLAN - ELECTRICAL	
PLAN NO. 233	DRAWING NUMBER 3 of 4



BECK CONSTRUCTION CO.	
CO. BLDG.	NAPOLEON, OHIO
SCALE: 1/4" = 1'-0"	APPROVED BY:
DATE: AUG. 1988	DRAWN BY EDS
FLOOR PLAN - HEATING	
PLAN NO. 233	DRAWING NUMBER 4 of 5

